

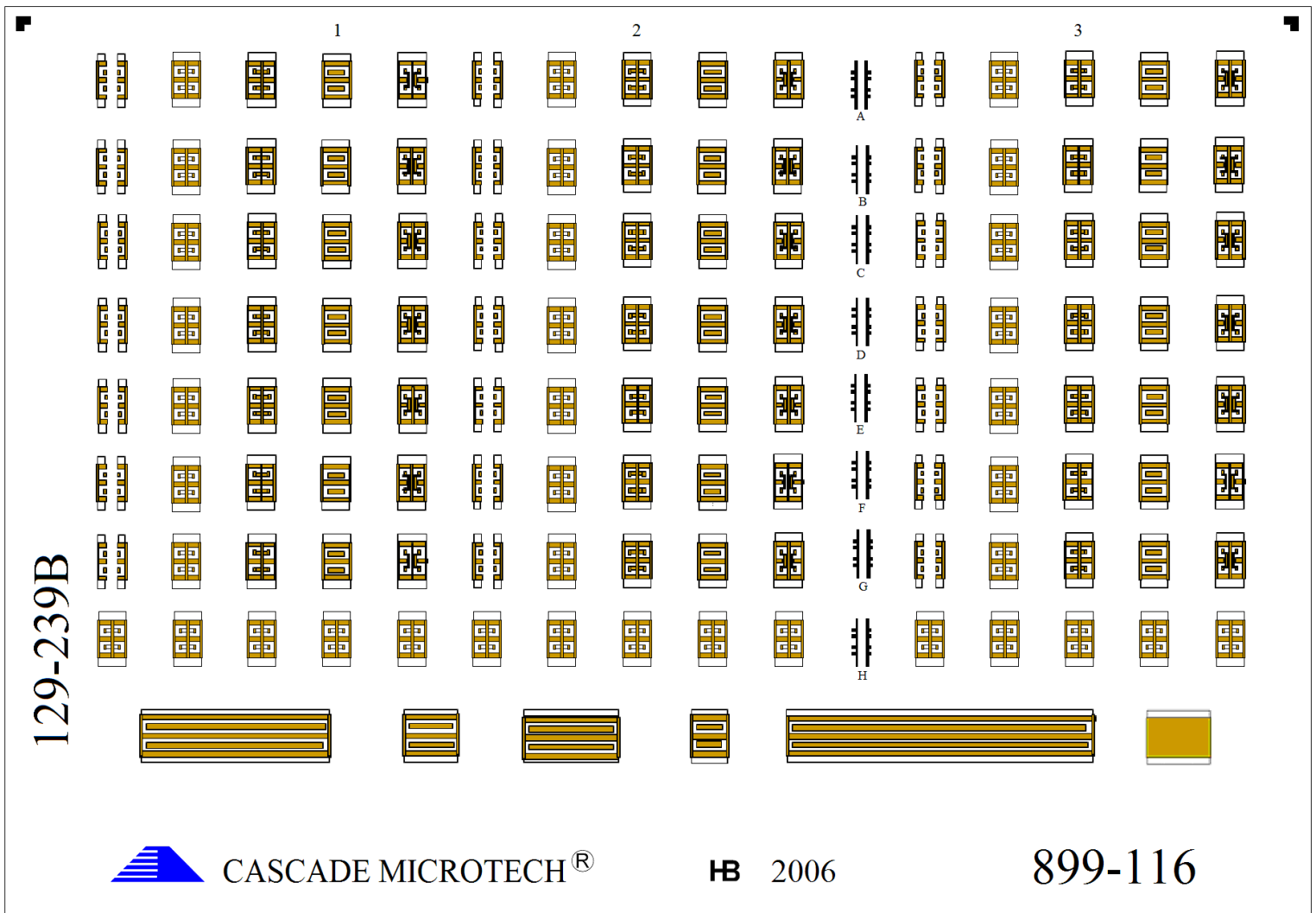
Cascade Impedance Standard Substrate Map

000111100010

► **P/N: 129-239**

Pitch: 100 μm - 125 μm

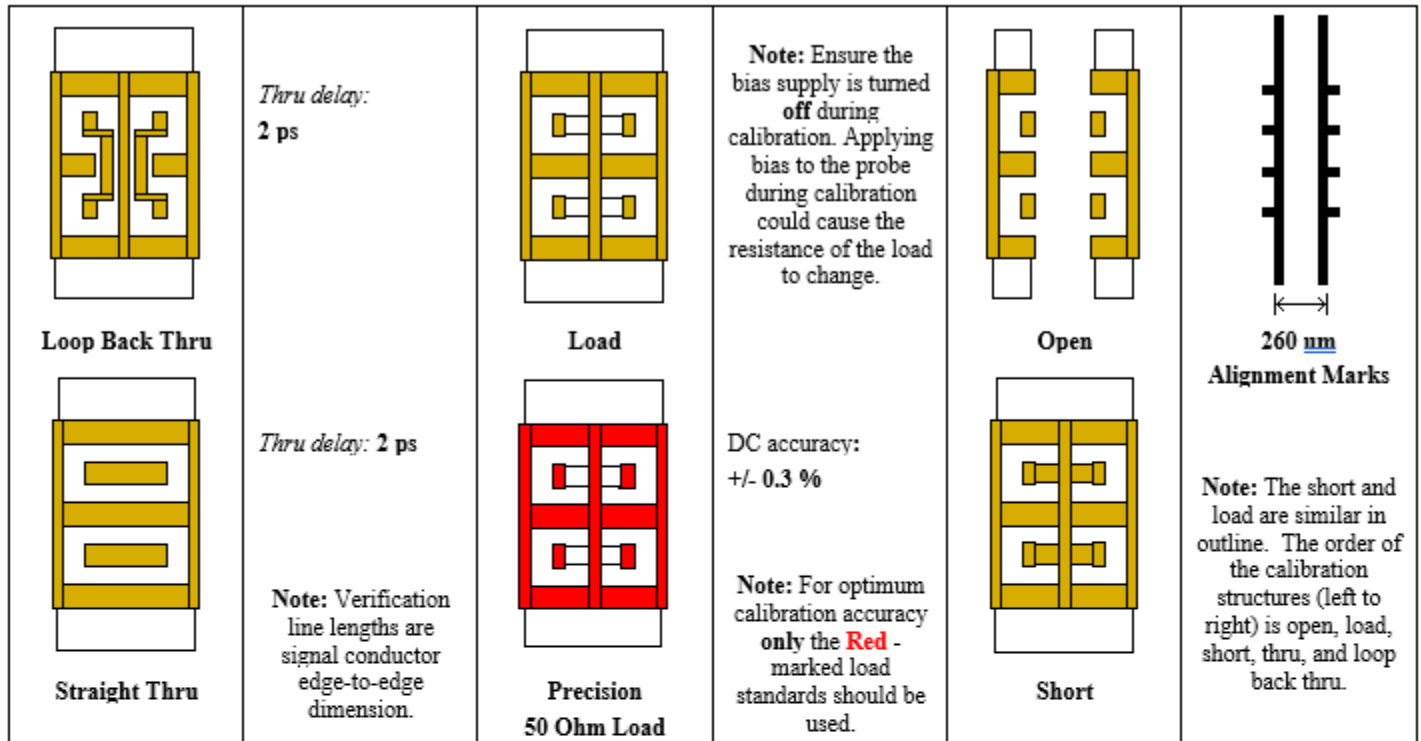
Configuration: **GSGSG, GSGS, SGSG, SGS**



> Key to Map

Key to the 129-239 Map

Substrate specifications: Material: Alumina; Thickness: 25 mils (635 um); Dielectric constant: 9.9



	Verification Lines (from left to right)				
Thru Delay (ps)	27	7	14	3	40
Length (um)	3500	900	1800	450	5250

	Overtravel
ACP	75 - 100 um
Infinity	50 - 75 um

All of the above specifications are based on the recommended overtravel (downward movement of probe after initial touchdown on the substrate) listed above. This amount of overtravel can be set before calibration on the Impedance Standard Substrate (ISS) using the alignment marks (allows precise setting of probe separation and overtravel). Figure 1 shows that initial contact with the edge of the probe tips should be made at reference plane X. The desired overtravel and thus skate (forward movement of probe tips after initial contact with substrate) is then achieved by adjusting the Z height on the positioner to move the edge of the probe tips to reference plane Y. This can also be seen from the photographic images shown in Figure 2.

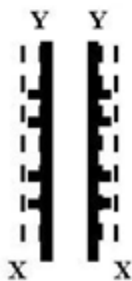


Figure 1: Alignment marks

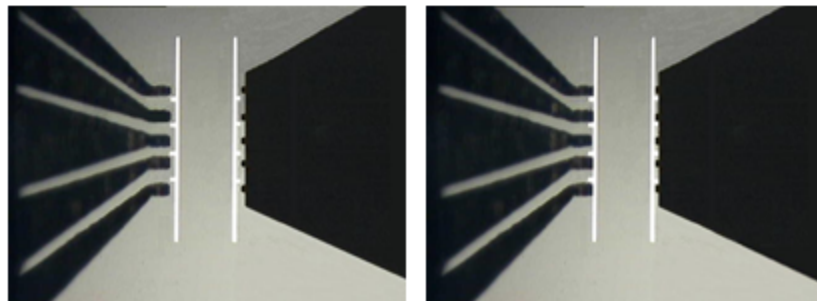


Figure 2: Images showing correct alignment and placement of probe tips

Calibration Coefficients are dependent on the probe tip configuration, placement on a standard, and the standard configurations. This leads to unique calibration coefficients for a unique pair of probe and ISS. Therefore, the calibration coefficients are supplied with the probe not with the ISS.

© Copyright 2020 FormFactor, Inc. All rights reserved. FormFactor and the FormFactor logo are trademarks of FormFactor, Inc. All other trademarks are the property of their respective owners. All information is subject to change without notice.

Corporate Headquarters
7005 Southfront Road
Livermore, CA 94551
Phone: 925-290-4000

Document PN: 133-556 rev C