

Quadrant Probe

Design Capture Form



Please fill out the form below and return it to Cascade Microtech or your local representative.

| | | | |
|------------------|--|-------------------|--|
| Date | | PO# | |
| Company | | Requisitioner | |
| Buyer | | Technical contact | |
| Shipping address | | | |
| City/State | | Phone | |
| Country | | FAX | |
| Postal code | | Email | |

For exact re-order, specify serial or PCN #

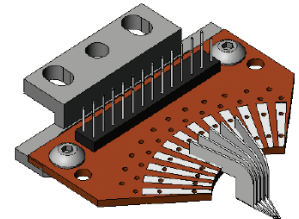
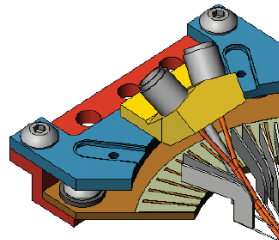
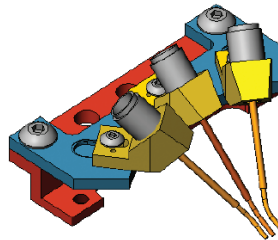
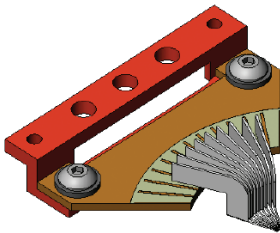
For new orders, please fill out information below.

Probe Type (mark one):

DC only (DCQ)

RF or mixed DC/RF (ACP-Q)

WPH-900*



*BeCu tips unavailable

Pad Material

- Gold
- Aluminum
- Other

Probe Tip Material

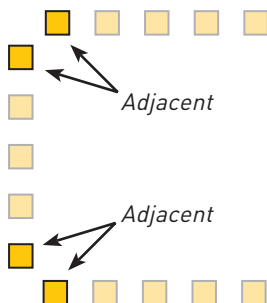
- BeCu (Unavailable for WPH-900)
- Tungsten

Pad Size (contact area)

Specify minimum pad size:

Adjacent Quadrants

- No Yes (Attach DUT layout or probe contact coordinates)



Cable and Connector (Not provided on WPH-900)

- 28 AWG Teflon wire (21 inch long) and 2 x 13 square pin
Or specify length:

- RG-178 coax and BNC*
Specify length (maximum 5 feet):

- Other: (mark connector type below)

- Banana plug
- D-Sub*
- SMA*
- Triax*
- Un-terminated
- Combination of several types

*Additional charges may apply. Specify length:

DCQ (maximum 16 DC needles)

Probe Pitch

- Uniform: (μm) pitch
- Variable: (indicate pitches in the diagram below)

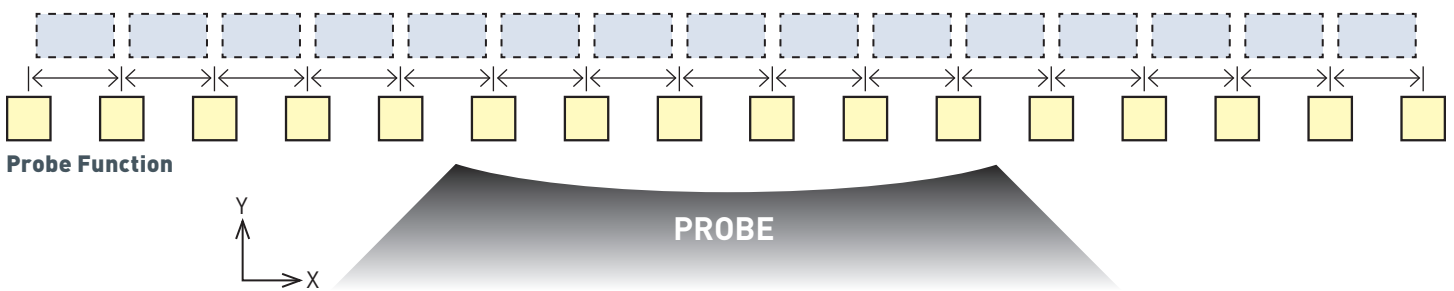
Probe Alignment

- Linear
- Non-linear (attach DUT layout or contact coordinates)

Indicate Probe Function in yellow boxes in the diagram below:

- P** = Power (100 pF gap capacitor)
- G** = Ground (0 Ω resistor)
- S** = Signal or Logic (no components)
- O** = Other: Provide component information

Pitches (if variable)



ACP-Q

Dual signals: Limit one per ACP-Q (placed at center RF position)
 Single signals: Allow at least 1200 μm between individual RF signals. Maximum three signals.

RF Frequency

- 40 GHz
- 50 GHz
- 65 GHz
- 110 GHz

RF Pitch

- Specify pitch between 100 and 1250 μm
- (μm) pitch
- Per attached DUT layout

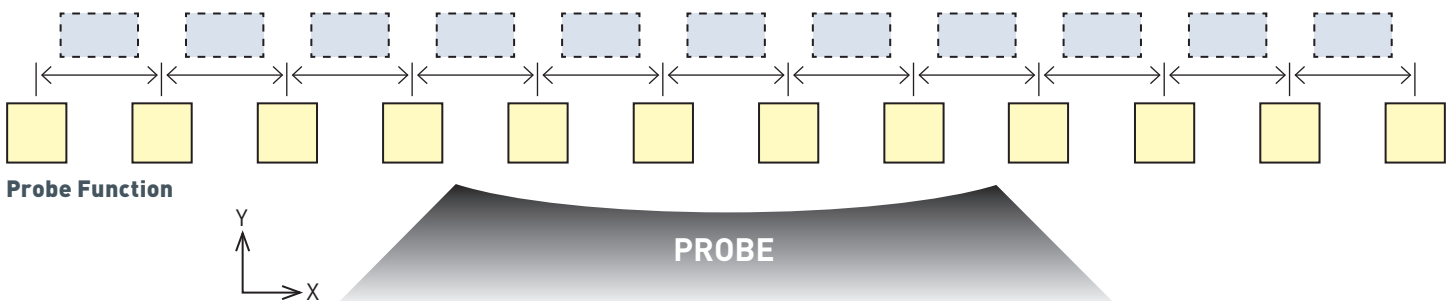
Probe Alignment

- Linear
- Non-linear (attach DUT layout or contact coordinates)

Indicate Probe Function in yellow boxes in the diagram below:

- P** = Power (100 pF gap capacitor)
- G** = Ground (0 Ω resistor)
- S** = Signal or Logic (no components)
- RFG** = RF Ground
- RFS** = RF Signal
- O** = Other: Provide component information

Pitches (if variable)



Quadrant Probe

WPH-900 (maximum 12 DC needles)
&

Probe Pitch

- Uniform (specify pitch)
 (μm) pitch
- Per attached DUT layout

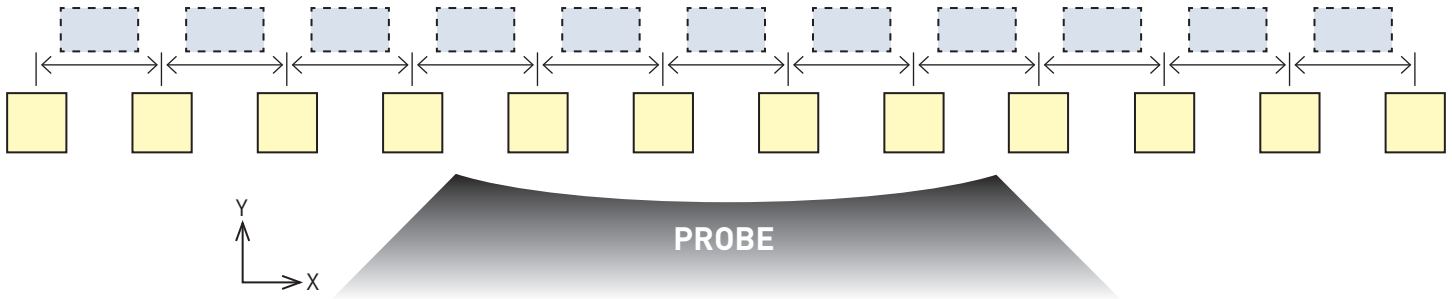
Probe Alignment

- Linear
- Non-linear (attach DUT layout or contact coordinates)

Mounted Components on PCB

- No
- Yes (provide schematic and component information)

Pitches (if variable)



Additional Instructions:

©Copyright 2011 Cascade Microtech, Inc.
All rights reserved. Cascade Microtech is a registered trademark of Cascade Microtech, Inc. All other trademarks are the property of their own respective owners.

Data subject to change without notice.

Cascade Microtech, Inc.
Corporate Headquarters
toll free: +1-800-550-3279
phone: +1-503-601-1000
email: cmi_sales@cmicro.com

Germany
phone: +49-89-9090195-0
email: cmg_sales@cmicro.com

Japan
phone: +81-3-5615-5150
email: cmj_sales@cmicro.com

China
phone: +86-21-3330-3188
email: cmc_sales@cmicro.com

Singapore
phone: +65-6873-7482
email: cms_sales@cmicro.com

Taiwan
phone: +886-3-5722810
email: cmt_sales@cmicro.com

