

# Velox™ 2.4 Highlights

## Probe Station Control Software

### Most powerful engineering software in the market

The new Velox 2.4 release concentrates on new hardware support and core applications, as well as usability improvements. The software supports all new 200 mm probe systems and the new eVue IV\* Microscope. A free upgrade is available for existing customers during scheduled service visits.\*\*

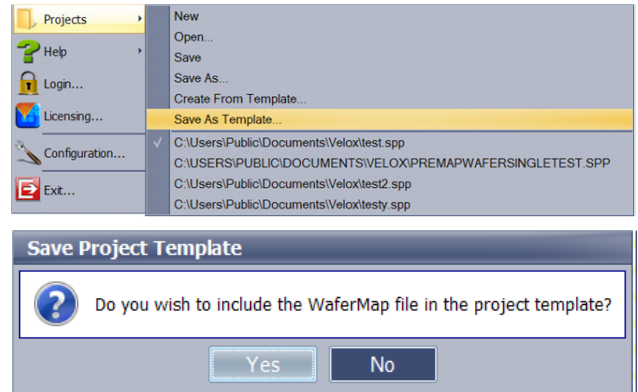
## Project Templates

### Creation of project templates

- / Project settings and WaferMap can be saved as template
- / Allows migration of projects between systems

#### Benefit:

Faster creation of new projects and lower error rate



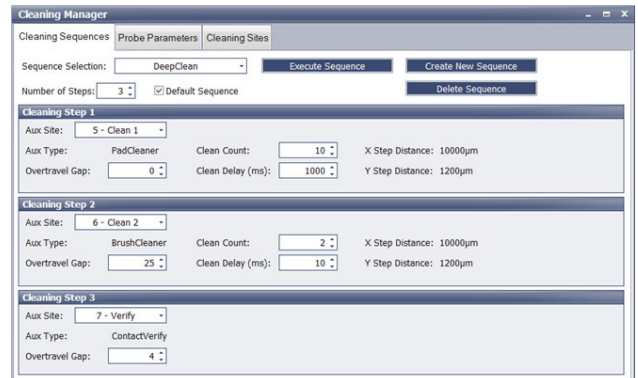
## Cleaning Manager

### Probe cleaning

- / On-chuck cleaning solution
- / Complex customer specific cleaning sequences possible
- / Only one execute command necessary
- / No complex programming knowledge necessary

#### Benefit:

Complex probe cleaning is now much easier



## Navigation Helper

### Status Window

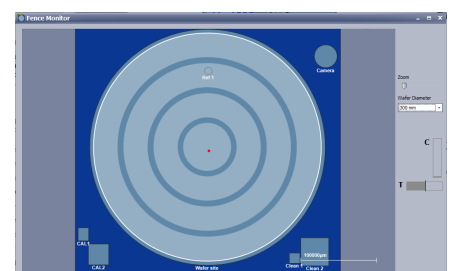
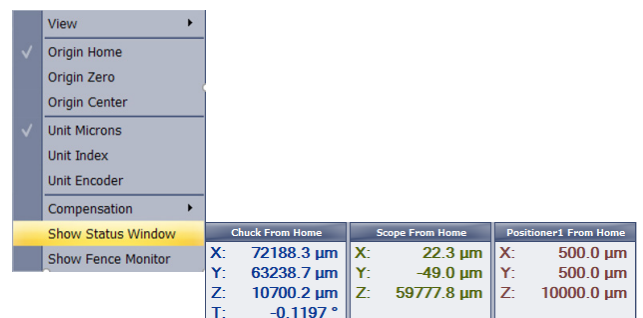
- / Extension to existing Position Monitor
- / Allows viewing multiple positions simultaneously
- / Window is moveable on the desk

### Fence Monitor

- / Graphical representation of current chuck location

#### Benefit:

All data in one view



\*The new eVue IV Digital Imaging System will be available in October 2018.

\*\*Customers with Cognex dongle need to pay upgrade fee. The eVue I and eVue II systems will not be supported.

# SPECTRUM Vision System

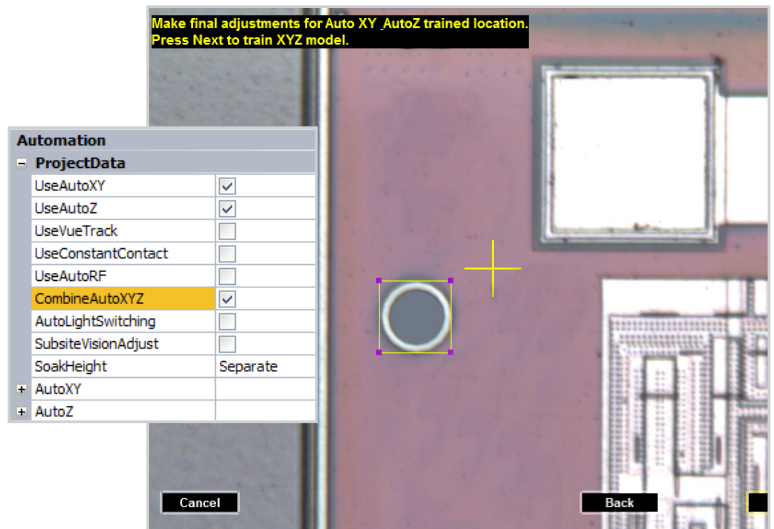
## Auto Train

- / Combination of AutoXY and AutoZ for tool training possible
- / AutoXY and AutoZ use the same target
- / Reduced working steps at tool training

## PreMapWafer tool

- / Can now use Scope camera for PreMapWafer with AlignChip

**Benefit:**  
Improved efficiency and flexibility

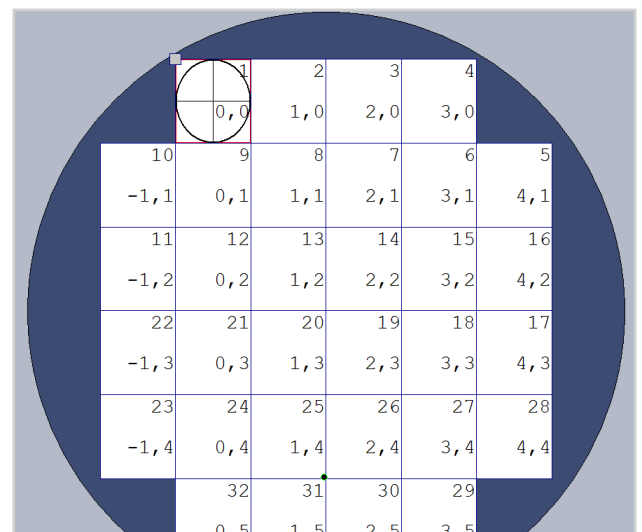


# WaferMap

## WaferMap test routine

- / New SCI command "StepToDie n"
- / Dies selectable with numbers, not only with coordinates

**Benefit:**  
More comfortable operation through easier programming



# VeloxPro

## Wafer handling

- / No production stop due to incorrect-read ID
- / Allows easy editing of the wafer ID by right-clicking on cassette slot

**Benefit:**  
Always 100 percent ID labeling

