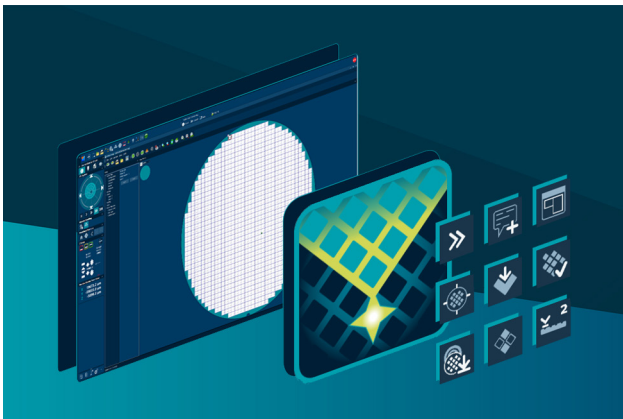


Velox™ 3.0 Highlights

Probe Station Control Software

The most powerful engineering software in the market

The all new Velox™ 3 is the first successfully completed step of our mission to make the world's most powerful engineering software even better. Velox 3 introduces a new icon and color concept, is Windows 10 compatible and comes with a completely integrated loader UI. The user experience will massively improve. And this is just the beginning. A free upgrade is available for existing customers.*

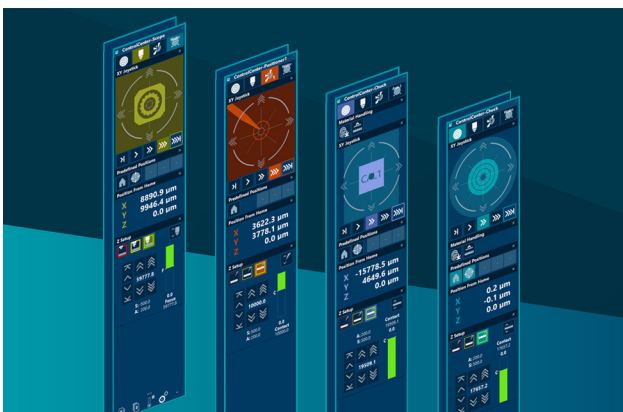


NEW ICONS AND SKINS

- / Modern look-and-feel
- / Better recognition
- / Clear differentiation between app icons and functions icons
- / Reduced menu nesting for easier access to Velox features

Benefit:

Better focus on the essential user workflows, substantially lower training costs.



Optimized Control Center

- / Larger stage selection buttons
- / More space between buttons and information
- / Unique colors for each different stage

Benefit:

Improved usability

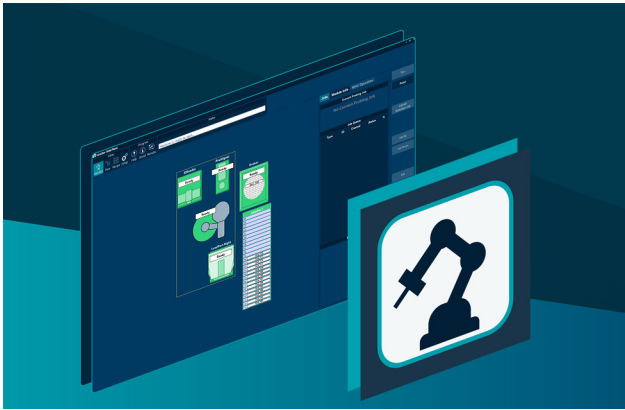


Windows 10 Compatible

- / Designed for Windows 10
- / Supports state-of-the-art hardware and interfaces
- / Innovative, intuitive and widely-used Windows Fluent Design System is adopted for several Velox functions, such as the SetupTool

Benefit:

Guarantees highest performance and safe operation

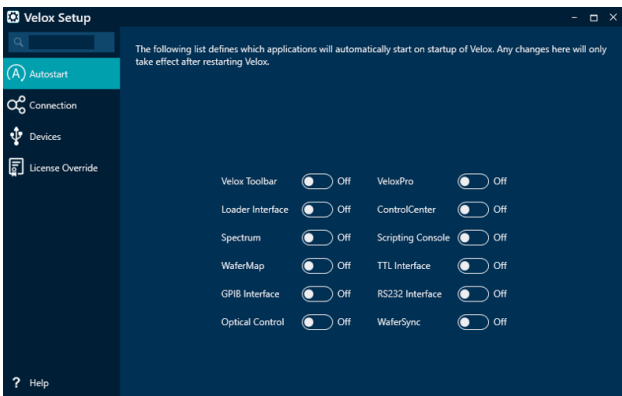


Loader Integration

- / A loader can now be operated directly with Velox (load wafers, scan cassettes, create flows/recipes)
- / No need for any additional software
- / Creation of workflows and receipts is as simple as it can get
- / VeloxPro is still available for users who require Semi E95 compliant UI and/or test executive

Benefit:

Drastically improves the operation with fully-automated probe stations, reducing time and training efforts

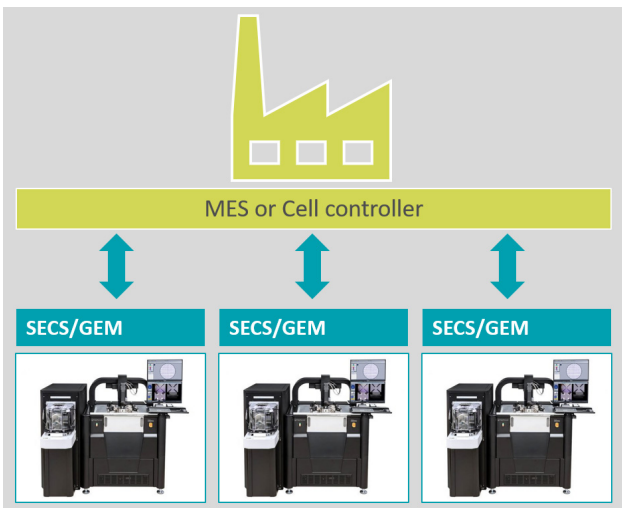


Velox Setup Tool

- / A loader can now be operated directly with Velox (load wafers, scan cassettes, create flows/recipes)
- / No need for any additional software
- / Creation of workflows and receipts is as simple as it can get
- / VeloxPro is still available for users who require Semi E95 compliant UI and/or test executive

Benefit:

Drastically improves the operation with fully-automated probe stations, reducing time and training efforts



SECS/GEM

- / Optionally available
- / SEMI-compliant factory interface for production companies
- / Connection between station and higher level (MES or Cell controller)
- / Transmits probe station status, process parameters...

Benefit:

Advanced equipment integration and data collection

* Requires Service visit and upgrade to Windows 10. Special offers are available for recently shipped systems. Please contact your local sales person for more information.