

# Velox™ 2.6 Highlights

## Probe Station Control Software

### The most powerful engineering software in the market

The new Velox 2.6 release concentrates on new hardware support for the CM300xi as well as usability enhancements for more user comfort. In particular, the Autonomous RF function has been improved in terms of accuracy and measurement speed. A free upgrade is available for existing customers.\*

### Support of the new compact MHU301 for CM300xi

- / Material Handling Unit with SEMI-compliant load port for standard wafer cassettes
- / Fully-automated test of up to 25 wafers in FOUP
- / No manual handling of wafers required, reducing effort and risk of wafer breakage
- / All wafers can be of different design
- / Automatic pre-alignment of wafers
- / Field-upgradeable to (already existing) CM300xi probe systems which have been prepared for a future MHU upgrade

**Benefit:**

SEMI-compliant automation in the smallest lab space

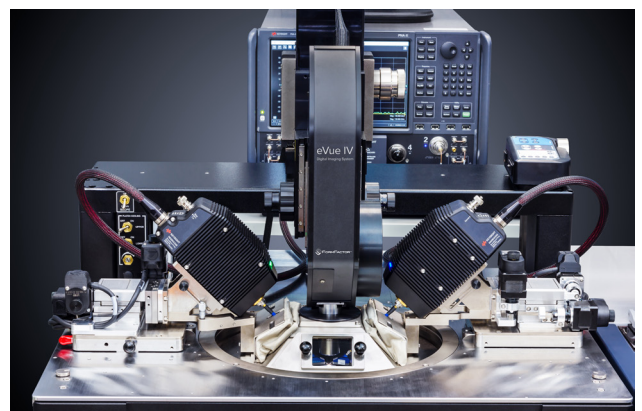


### Extended capabilities of Autonomous RF Measurement Assistant

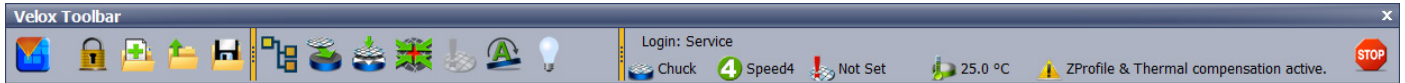
- / 50 µm probe support
- / Alignment wizards optimized
- / Automation for Multi-line TRL calibration
- / More threshold settings for exact measurement

**Benefit:**

Improved accuracy, higher application flexibility, ease of use



## Toolbar – additional status information



- / Enhanced status information
- / Higher safety in manual mode

### Benefit:

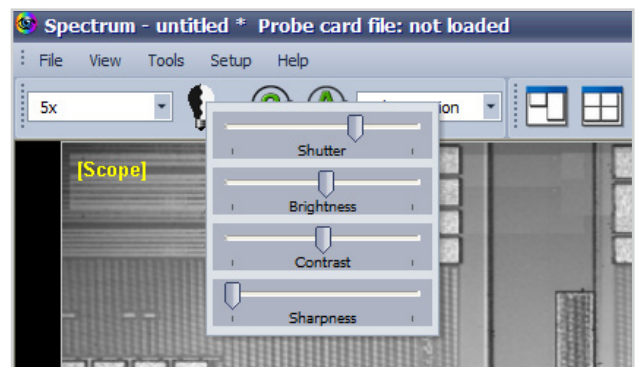
More information for advanced users

## New automated light settings in SPECTRUM Vision System

- / Microscope light settings adjust automatically depending on use case
- / Enables switching between Aux sites and wafer without visibility limitation
- / Reduces manual intervention during setting up

### Benefit:

More automation for faster time to measurement



## Enhanced AutoAlign

- / Fully-automatic wafer X and Y alignment included (additionally to the theta alignment function)
- / Reduced working steps
- / Improved usability
- / Most ergonomic and quickest way to align a wafer for 90% of use cases

### Benefit:

Simplification of wafer setup

## Unique wafer safety over power cycle

- / Wafer tracking after power down or emergency stop

### Benefit:

No more lost wafers in unexpected situations

\* Requires Service visit.